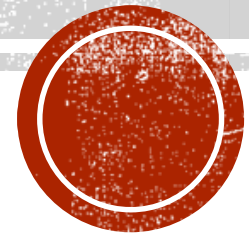


EARLY SITE WORK

Mayor's Office of the National Western Center
Citizen's Advisory Committee | July 27, 2017



NATIONAL WESTERN SEGMENT OF BRIGHTON BLVD

- Brighton Boulevard construction is scheduled to begin this February, after the 2018 Stock Show.
- Several sites along the Brighton Boulevard corridor will need to be prepared for this construction.
- Early activities are planned from August – December



WHAT IS EARLY SITE WORK?

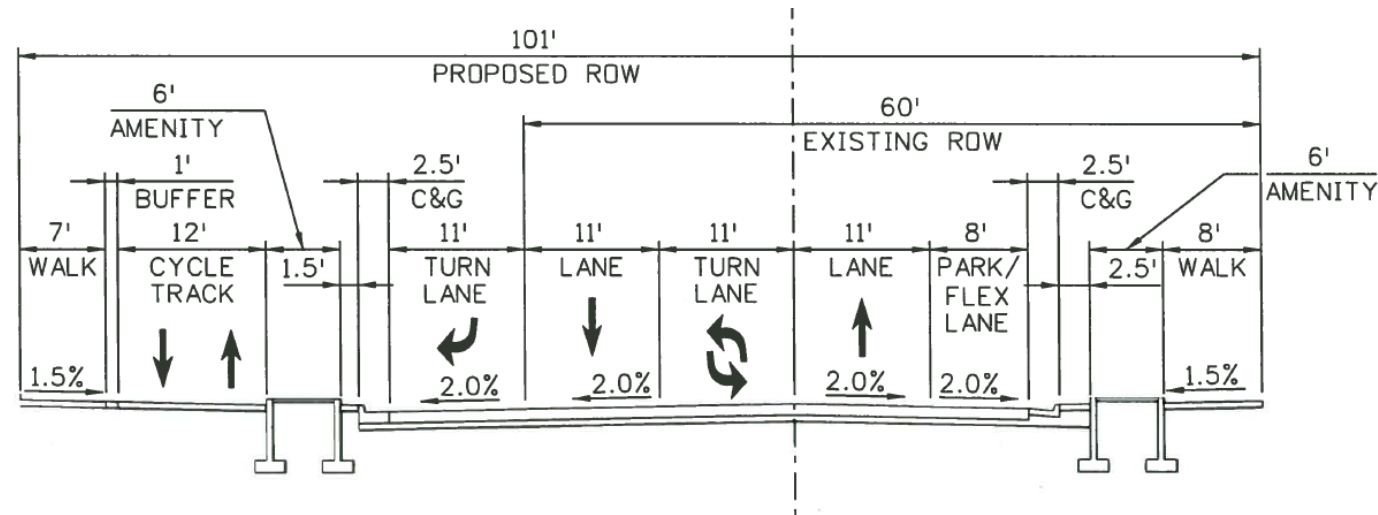
All of the activities required to prepare the project site for future development

- Activities will include:
 - Environmental assessments
 - Environmental abatement and remediation
 - Removal of site utilities
 - Clearing site improvements and vegetation
 - Grading and stabilizing the soil



WHY THE NEED FOR EARLY SITE WORK?

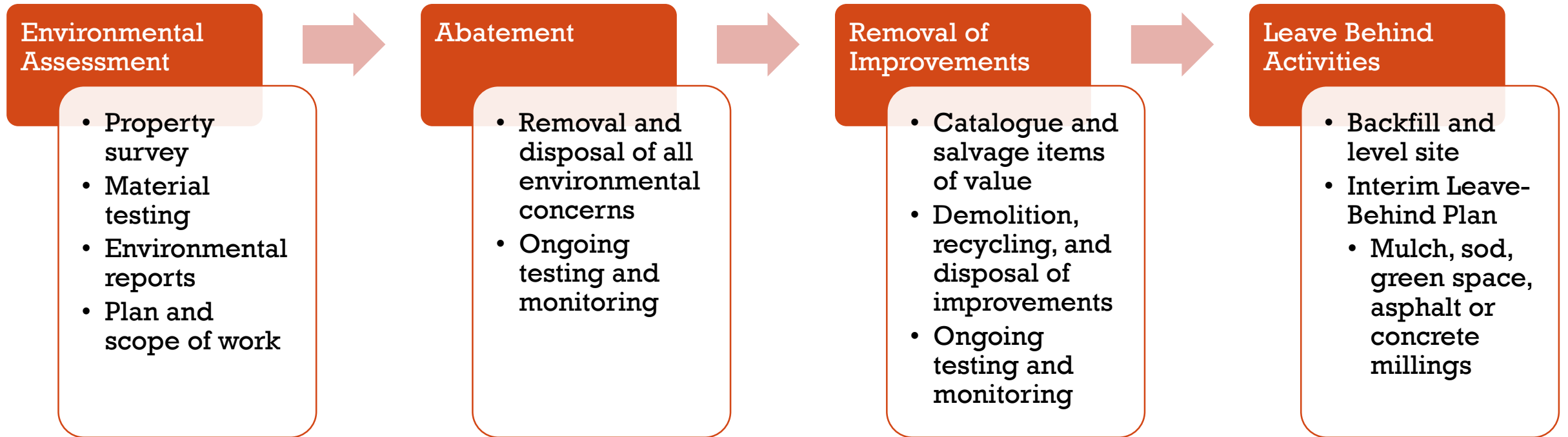
- Plans for widening Brighton Boulevard require additional land for the planned improvements
 - Improvements such as:
 - New lanes
 - Bridge reconstruction
 - Separate bike and walking paths
 - Benches, street lighting and various aesthetic improvements
 - New and improved drainage
 - Access to future mass transit
- Schedule
- Safety



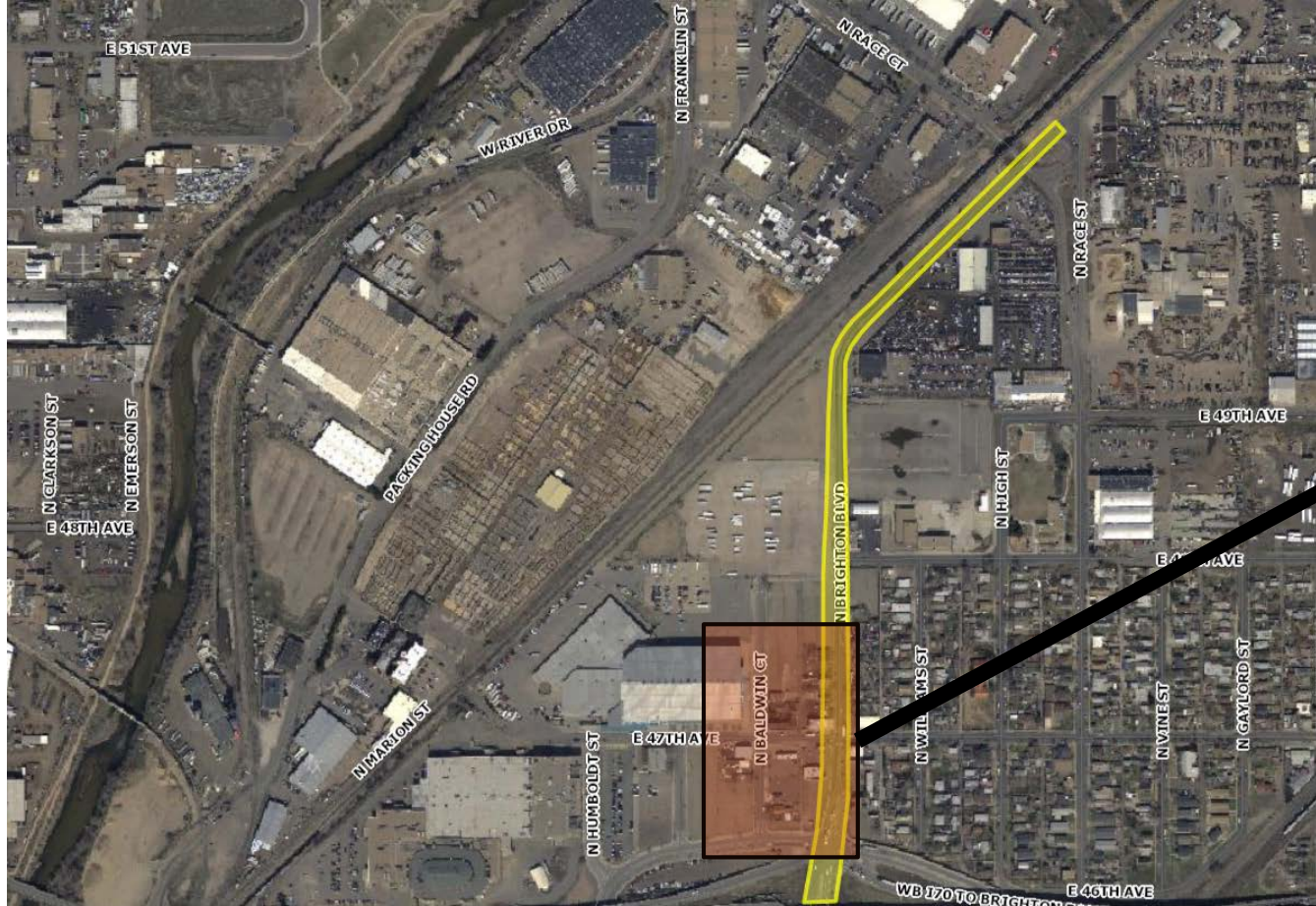
Proposed section of Brighton Blvd
looking north between 47th and 48th



HOW DO WE PERFORM THIS WORK?



BOUNDARY AREAS



Campus Overview



Location of Early Site Work



SAFETY MEASURES

- General Health and Environmental Compliance
 - City and County of Denver Department of Environmental Health (DEH)
 - Colorado Department of Public Health and Environment (CDPHE)
 - Environmental Protection Agency (EPA)
 - Occupational Safety and Health Administration (OSHA)
- Programmatic Measures
 - Material Management Plan
 - Site Safety Plan
- Project Specific Measures
 - Abatement and Demolition Plan
 - Contractor Safety Plan
 - Storm Water Management Plan
 - Dust Mitigation and Monitoring
 - Ongoing Sight Inspections
 - Daily Site and Street Clean-up
- Additional Measures
 - Limited Working Hours
 - Site Fencing
 - Hotline
 - Neighborhood Communications
 - Website Updates and Contacts



PROJECT OVERSIGHT

Environmental Surveys

- Department of Environmental Health (DEH)
- Public Works (PW)
- National Western Center Office (NWCO)

Abatement

- Colorado Department of Public Health and Environment (CDPHE)
- Environmental Monitoring Consultant (EMC)
- DEH
- PW
- NWCO

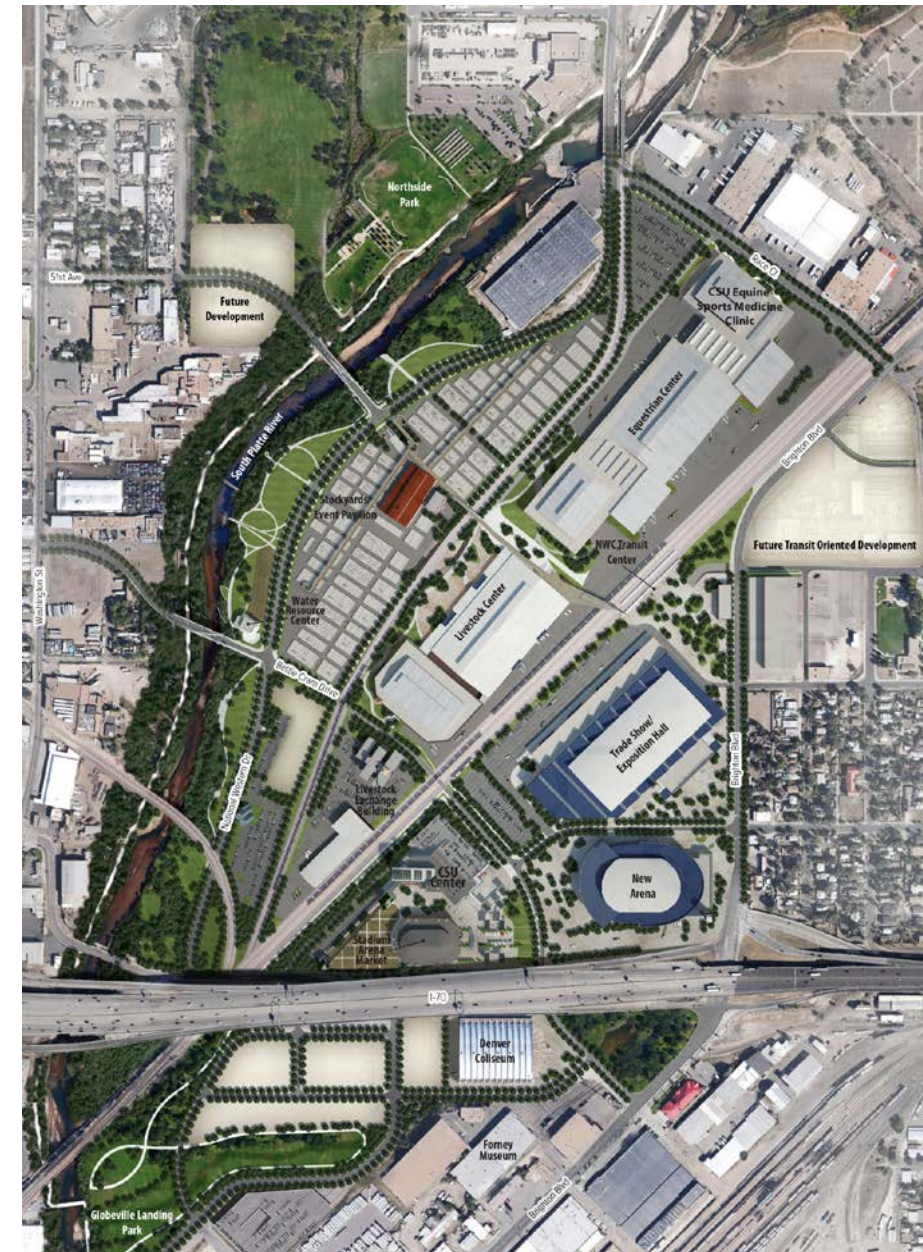
Demolition and Leave-Behind

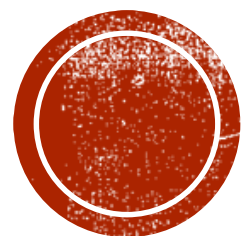
- Community Planning and Development Building Inspections (CPD)
- Wastewater Management Division (WMD)
- Construction Engineering (CE)
- Right of Way Inspections (ROW)
- CDPHE, EMC, DEH, PW, NWCO



WHAT ARE THE BENEFITS OF THIS WORK?

- **Safety** - Vacant buildings are unsafe and attract more attention and trouble, best to remove structures to maintain a clean and safe area.
- **Schedule** - These early efforts allow the necessary time to salvage materials and perform extensive environmental testing, while still staying on schedule.
- **Brighton Boulevard Improvements** - Early preparation of the area allows work on Brighton Boulevard to maintain schedule. Brighton Boulevard will have new lanes, bike path, walking path, lighting, benches, etc. as well as access to mass transit.





QUESTIONS?